

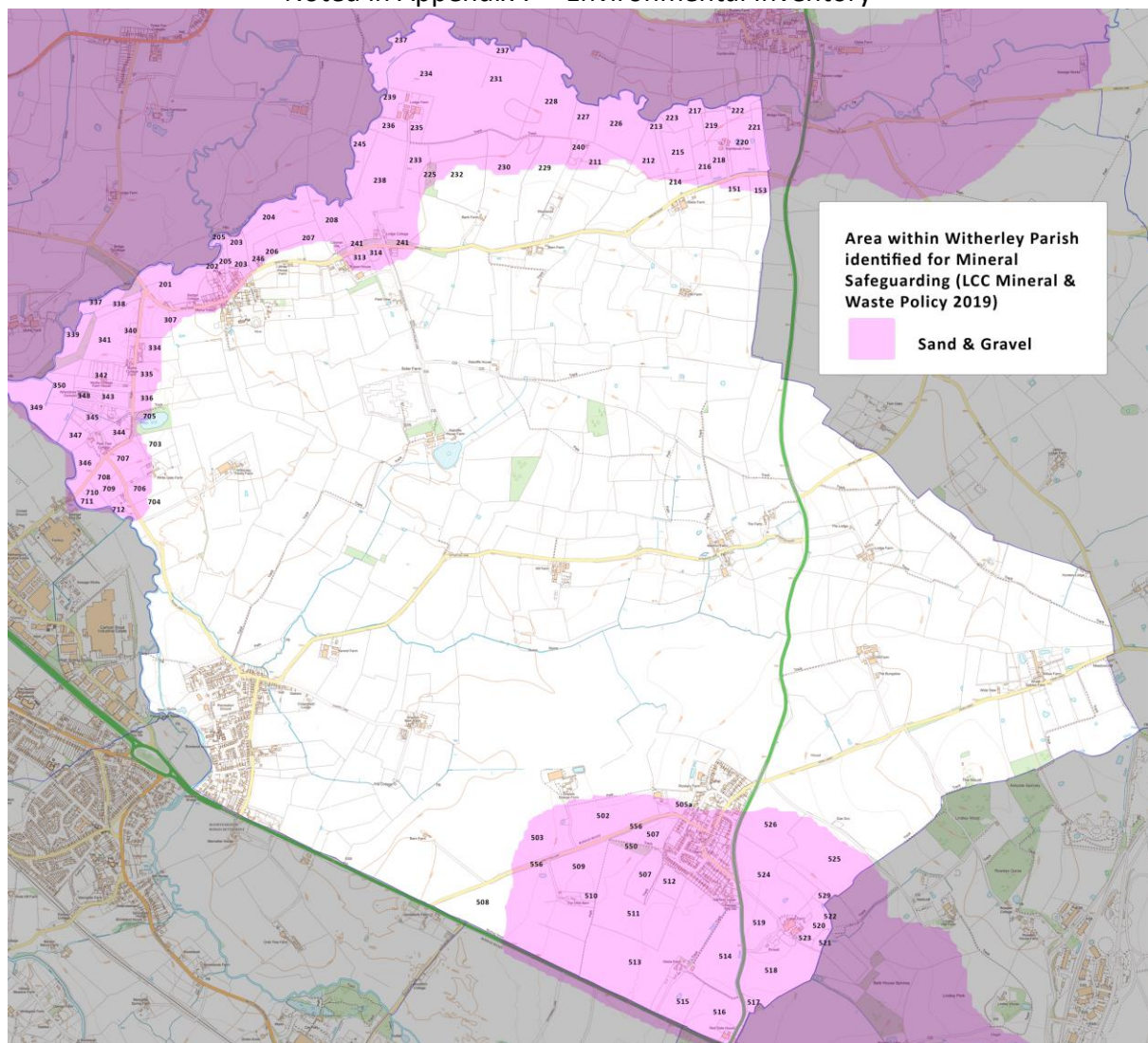
Designated Mineral Safeguarding Areas

With reference to documentation adopted in 2019 for the 'Leicestershire Minerals and Waste Local Plan up to 2031', the Environment Group identified sites within Witherley Parish which intersect with designated Mineral Safeguarding Areas (MSAs).

The main purpose of the Mineral Safeguarding Areas is to protect a mineral resource for future generations. The deposits of sand and gravel identified are of current and future economic importance. An MSA is not a proposed area of extraction and it does not mean that mineral extraction will be permitted within the area.

The guidance of Leicestershire County Council should be sought for any development proposed in these areas.

Mineral Safeguarding Areas Containing Sand and Gravel and
Noted in Appendix 7 – Environmental Inventory



Witherley Neighbourhood Development Plan

A Supporting Document for Appendix 7 - Environmental Inventory

A copy of the Mineral Safeguarding document produced for Hinckley & Bosworth Borough Council for mineral safeguarding, designated by mineral type.

Mineral Safeguarding



Figure HK1: Areas of borough/district for mineral safeguarding, categorised by mineral type

